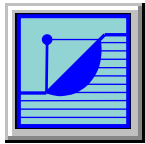


# GEOTEC Office

## Version 9.3



A package for geotechnical and design engineering

Windows XP/ Vista - Version 9.2, Service Pack 1

Program authors:

*M. El Gendy*

*A. El Gendy*

GEOTEC: GEOTEC Software Inc.  
PO Box 14001 Richmond Road PO  
Calgary AB, Canada T3E 7Y7

<http://www.elpla.com>

geotec@elpla.com

**Table of Contents**







Page

- I Introduction ..... 3**
  
- II Enhancements in *GEOTEC Office 9.2 SP1* ..... 4**
  - II.1 *GEOTEC Office* Quick Tour..... 4
  - II.2 Microsoft Office Web Components ..... 4
  - II.3 *GEOTEC Office* under Windows Vista..... 5
  
- III Installing *GEOTEC Office* ..... 6**

## 1 Introduction

GEOTEC Office is a package for geotechnical and design engineering. The package contains the following programs and tools:

Table 1 *GEOTEC Office* programs and tools

Program	Description
 <b>ELPLA</b>	Analyzing footings, rafts, piled rafts, pile groups and foundation groups. ELPLA considers different soil models, especially the three dimensional continuum model that takes into account any number of irregular layers. The program is able to handle the three solutions of flexible, elastic and rigid foundations. ELPLA can also be used to represent the effect of external loads, neighboring foundations, tunneling and the influence of temperature change on the raft.
 <b>BOHR</b>	Drawing borehole logging of soil layers by different symbols according to the German specification code DIN 4023.
 <b>TIEF</b>	Analyzing single piles, pile walls, simple problems of pile groups and rigid piled rafts.
 <b>GeoTools</b>	Analyzing different problems in geotechnical engineering.
 <b>Self-Adaptive Mesh Wizard</b>	Generating finite element mesh with better element/ node distributions.
 <b>GEOTEC-Text</b>	A simple word processing program for editing GEOTEC Office output.

## 2 Enhancements in *GEOTEC Office 9.2 SP1*

### 2.1 *GEOTEC Office Quick Tour*

ELPLA quick tour program is replaced by *GEOTEC Office* quick tour (Figure 1). The tour program gives a quick access to the Office programs and tools listed in Table 1. It also provides a quick access to tutorials, verification examples and user's guides.

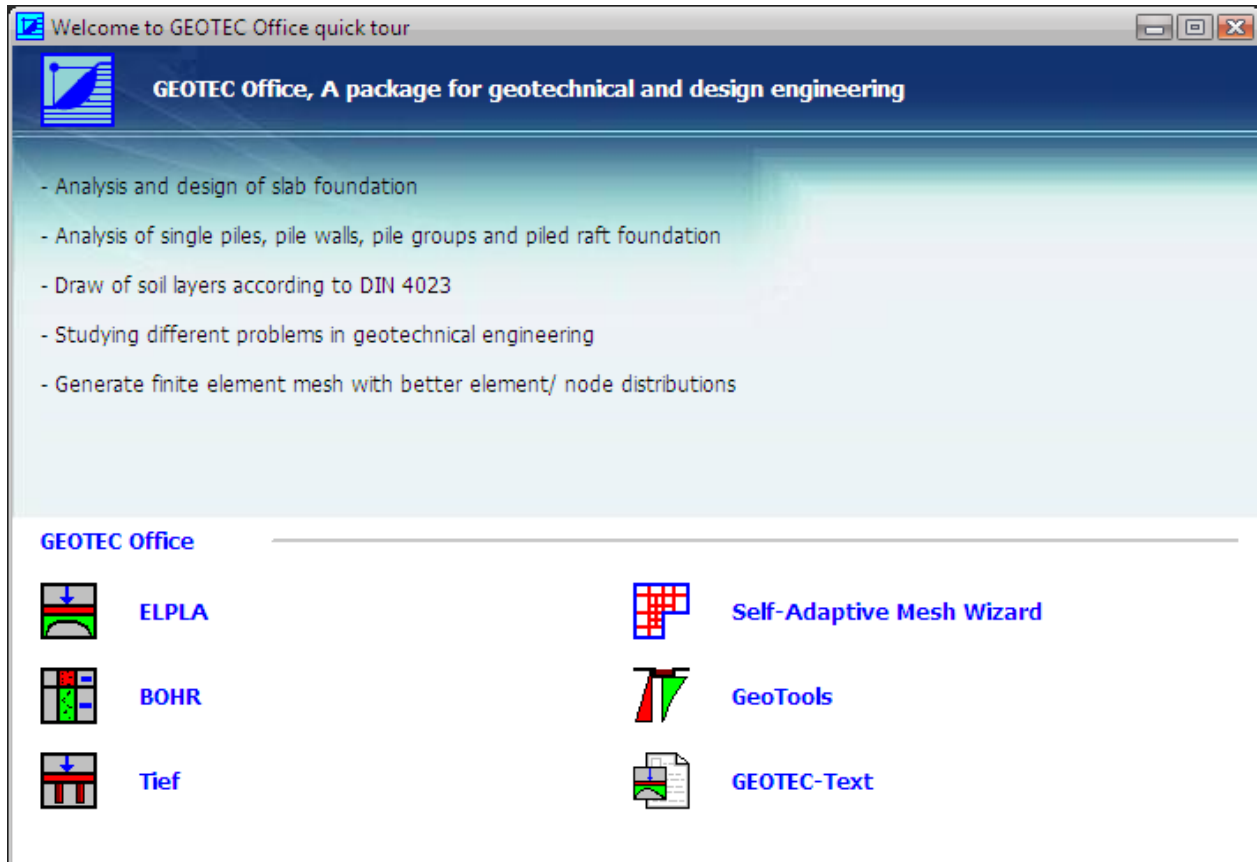


Figure 1 "GEOTEC Office Quick Tour" Program

### 2.2 Microsoft Office Web Components

Microsoft Office Web Components allow you to view and input data using interactive controls such as spreadsheet, chart, or database. GEOTEC Office uses Microsoft Office Web Components for inputting tabulated data (Figure 2). You can use the benefits provided by Microsoft Office Web Components-Spreadsheet control to easily define your data.

Earlier GEOTEC programs supported Office Web Components 9.0 only. GEOTEC Office 9.2 SP1 supports Office Web Components 9.0, 10.0 and 11.0. Office Web Components are distributed and licensed to be used in interactive mode by customers who have Microsoft Office according to Table 2.

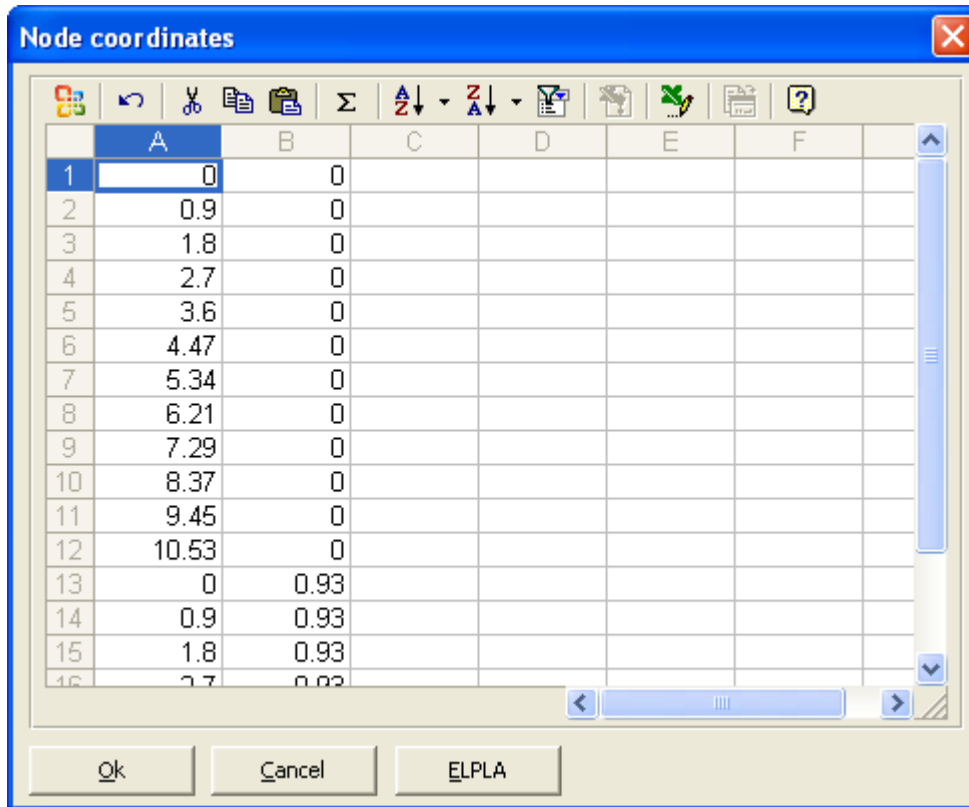


Figure 2 GEOTEC Office uses Microsoft Office Web Components - Spreadsheet control

Table 2 Office Web Component distributed by Microsoft office

Microsoft Office	Office Web Component
Office 2000	Office Web Component 9.0
Office XP	Office Web Component 10.0
Office 2003	Office Web Component 11.0

### 2.3 GEOTEC Office under Windows Vista

GEOTEC Office is successfully installed and run under Windows Vista. The main issue appeared when evaluating GEOTEC Office on Windows Vista is the new features in security. Administrator should be aware of these features to not block program functions. Of these features, Administrator should give users the appropriate access to folders where GEOTEC Office will save data.

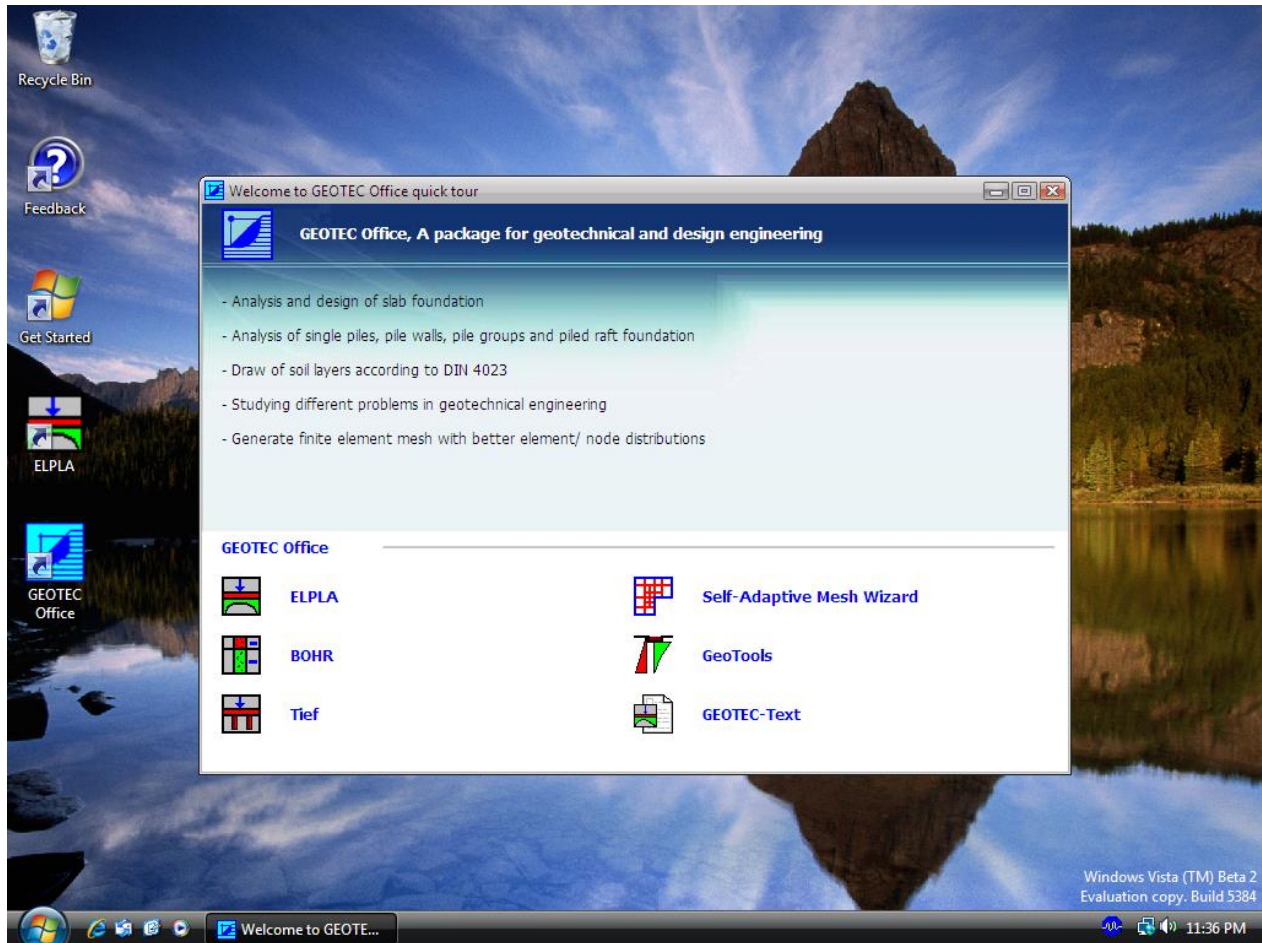


Figure 3 Running *GEOTEC Office* under Windows Vista

### 3 Installing GEOTEC Office

GEOTEC Office is distributed on a CD-ROM. The CD-ROM contains an installer program that installs the GEOTEC Office software on your computer.

To install GEOTEC Office, follow these steps:

- Insert the CD-ROM into your drive.

The installer program is automatically loaded when the CD-ROM is inserted into the drive (Figure 4). The installer will guide you through the steps required to install GEOTEC Office on your computer.

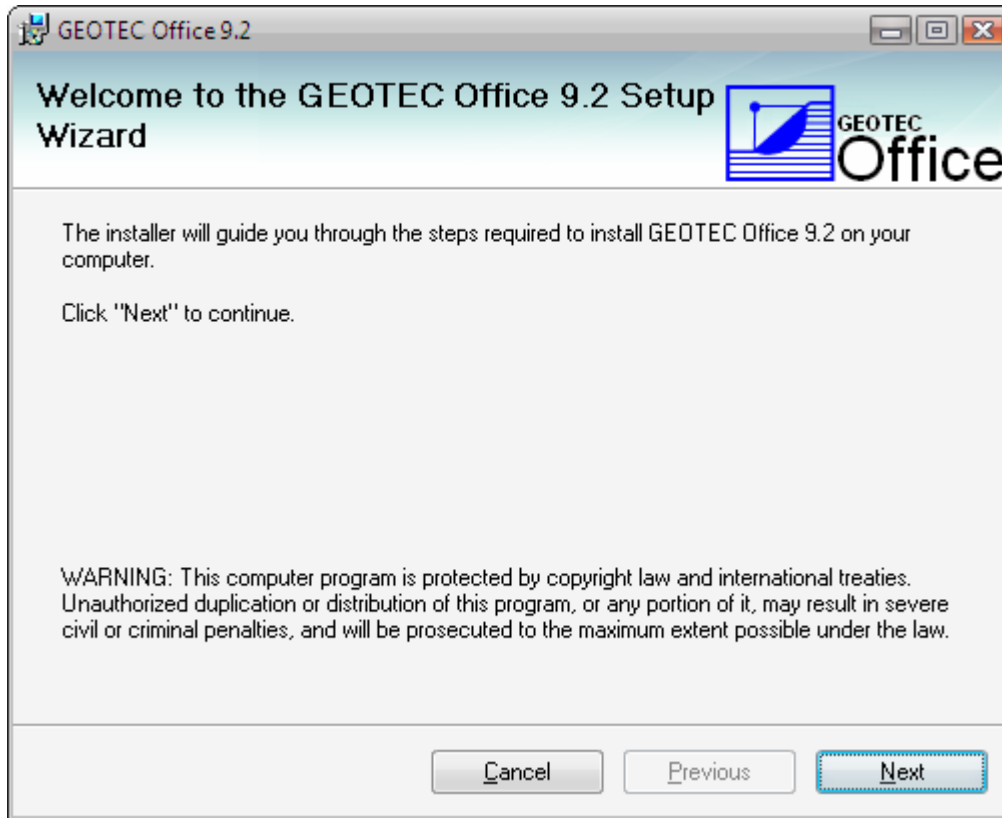


Figure 4 GEOTEC Office Installer form

- Click “Next” button in the form of Figure 4 to install GEOTEC Office on your computer.

GEOTEC Office Installer program begins execution. Follow the instructions given by the GEOTEC Office Installer program, Figure 5.

- Click “Next” button in the form Figure 5 to install GEOTEC Office software to the specified destination folder.

You can specify the folder for GEOTEC Office files. By default, GEOTEC Office suggests the (..\Program Files\GEOTEC Office). However, you can indicate a different folder name. GEOTEC Office creates the folder name you specify.

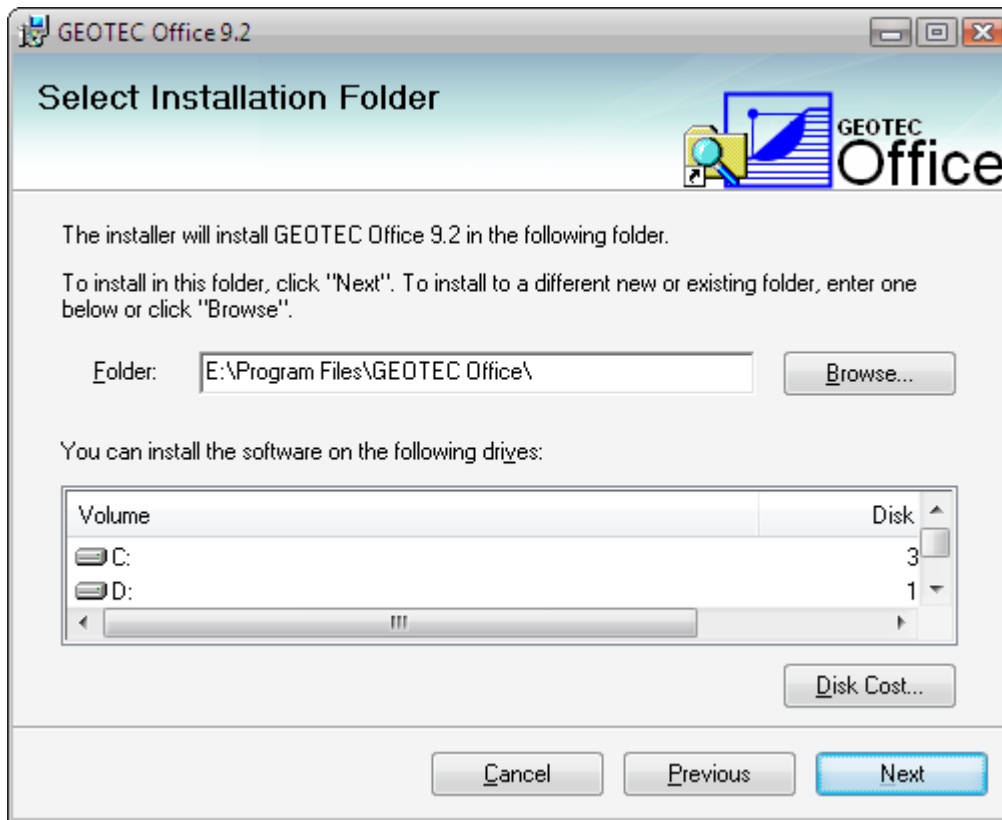


Figure 5 “Select Installation Folder” form

After select the installation folder, GEOTEC Office Installer program will be ready to install GEOTEC Office software on your program (Figure 6).

- Click “Next” button in the form of Figure 6 to start the installation.

GEOTEC Office will be installed and a statues form will show the process of installation (Figure 7).



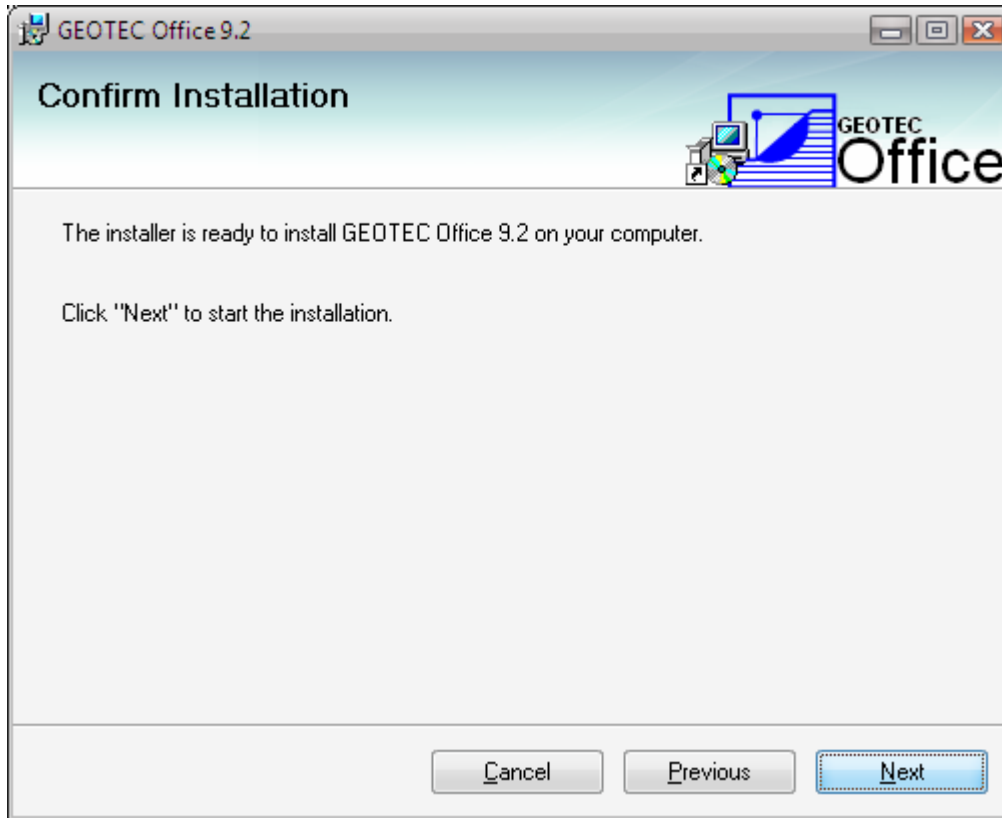


Figure 6 "Confirm installation" form

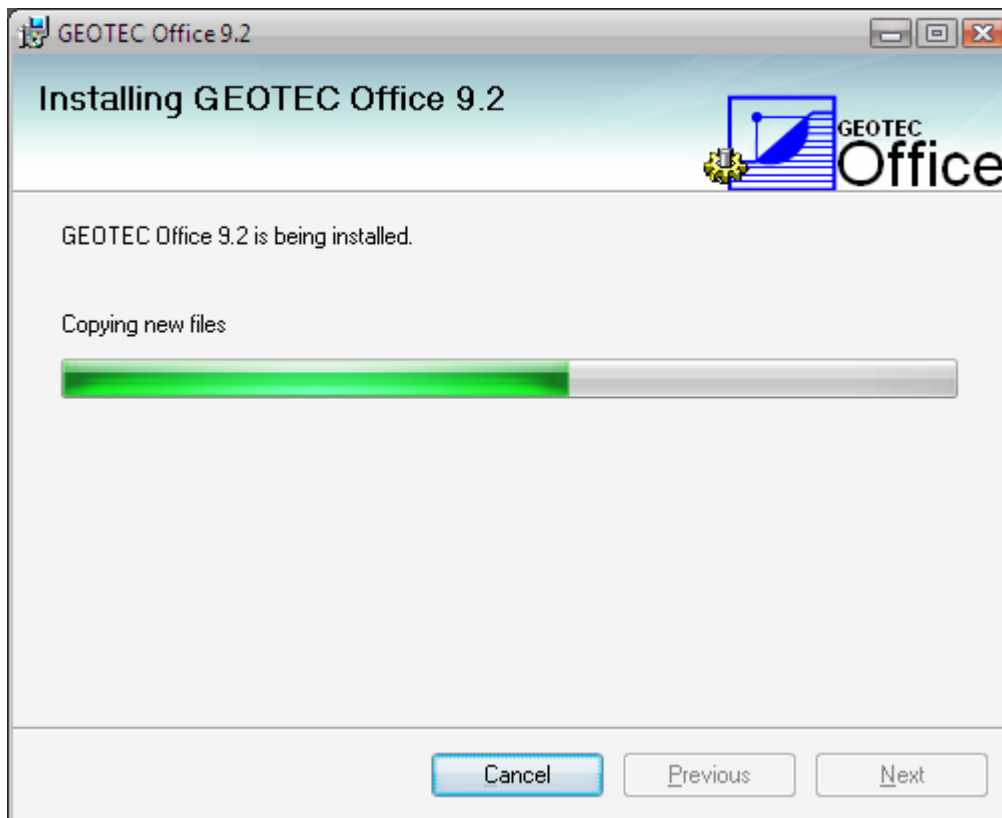


Figure 7 “Installing GEOTEC Office” form

GEOTEC Office installation will be completed and a message appears to inform you that the GEOTEC Office Installer was completed successfully (Figure 8).

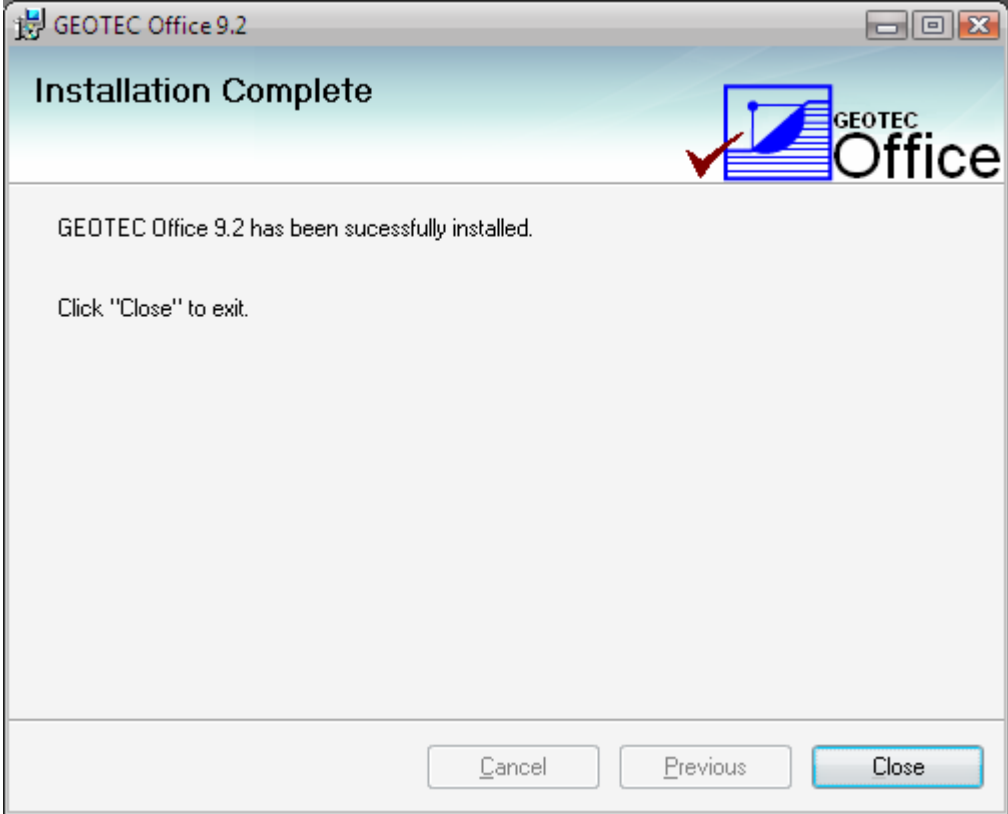


Figure 8 Final Installer message

**Note:**  
Installer cannot install update system or shared files, if they are in use. Before installing GEOTEC Office, it is recommended that you close any application may be running.